

## INSTALLATION INSTRUCTIONS

### TRIGGER LEVERS, GLOSS BLACK

1844

#### THANK YOU FOR CHOOSING KURYAKYN!

Protect yourself and others from possible injury and property damage or loss. Pay close attention to all instructions, warnings, cautions, and notices regarding the installation, use, and care of this product.

**WARNING** THIS INDICATION ALERTS YOU TO THE FACT THAT IGNORING THE CONTENTS DESCRIBED HEREIN CAN RESULT IN POTENTIAL DEATH OR SERIOUS INJURY.

**CAUTION** THIS INDICATION ALERTS YOU TO THE FACT THAT IGNORING THE CONTENTS DESCRIBED HEREIN CAN RESULT IN MINOR OR MODERATE POTENTIAL INJURY.

**NOTICE** THIS INDICATION ALERTS YOU TO THE FACT THAT IGNORING THE CONTENTS DESCRIBED HEREIN MAY NEGATIVELY AFFECT PRODUCT PERFORMANCE AND FUNCTIONALITY OR DAMAGE THE PRODUCT ITSELF OR THE PRODUCT TO WHICH IT IS BEING ATTACHED.

#### ENSURE THAT THE FOLLOWING PARTS HAVE BEEN INCLUDED IN THE KIT:

- 1 Trigger Brake Lever
- 1 Trigger Clutch Lever

#### YOU WILL ALSO NEED:

Snap-ring pliers, needle-nose pliers, grease, set of Torx drivers

PICTURES SHOWN ARE OF THE CHROME PARTS. INSTALLATION OF THE BLACK PARTS WILL BE THE SAME.

**NOTICE** THESE INSTALLATION INSTRUCTIONS CONTAIN IMPORTANT INFORMATION. ENSURE THE END USER RECEIVES THIS COPY AND IS AWARE OF ITS IMPORTANCE FOR FUTURE USE.

**STEP 1** Read and understand all steps in the instructions before starting the installation. Park the motorcycle on a hard, level surface and turn off the ignition. Let motorcycle cool. Remove main fuse.

**WARNING** A FACTORY SERVICE MANUAL WILL BE HELPFUL IN PERFORMING THIS INSTALLATION. DO NOT ATTEMPT TO PERFORM THIS INSTALLATION IF YOU ARE NOT CONFIDENT IN YOUR ABILITY TO COMPLETE ALL OF THE STEPS IN THE PROCEDURE; CONSULT A TRAINED TECHNICIAN. IMPROPER INSTALLATION COULD RESULT IN SERIOUS INJURY OR DEATH.

**WARNING** ACCIDENTAL VEHICLE START-UP COULD CAUSE DEATH OR SERIOUS INJURY, REMOVE THE MAIN FUSE BEFORE PROCEEDING.

**NOTICE** AVOID DAMAGE TO THE MOTORCYCLE. PROTECT PAINTED SURFACES WITH A SOFT CLOTH OR BLANKET.

#### CLUTCH SIDE

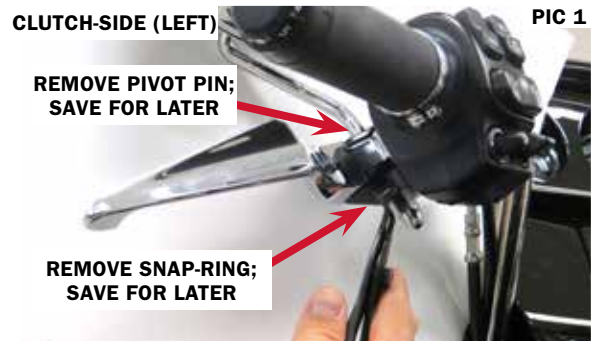
**STEP 2** Refer to PIC 1. Remove the snap-ring securing the clutch lever pivot-pin in the perch assembly; save it for later.

**STEP 3** Refer to PIC 1. Carefully remove the pivot pin; save for later.

**STEP 4** Carefully remove the existing clutch lever.

**STEP 5** Refer to PIC 2 and 4. Remove the roller bushing; ensure that the plastic alignment-cap remains in place. DO NOT LOSE THE ALIGNMENT CAP. Replace the alignment-cap if it is broken (H/D P/N. 46246-01).

**WARNING** DO NOT INSTALL THE LEVER IF THE ALIGNMENT CAP/ROLLER BUSHING IS DAMAGED OR MISSING! REPLACE DAMAGED OR MISSING CAP/BUSHING KIT WITH H/D P/N. 46246-01. OPERATING THE MOTORCYCLE WITH A FAULTY CLUTCH/BRAKE LEVER CAN LEAD TO LOSS OF CONTROL RESULTING IN DEATH OR SERIOUS INJURY.



## INSTALLATION INSTRUCTIONS

### TRIGGER LEVERS, GLOSS BLACK

1844

-CONTINUED-

**STEP 6** Install the roller bushing in the new Clutch Lever; apply a bit of grease to the roller; ensure that the pins on the plastic alignment-cap locate in the new lever as shown in PIC 2.

**STEP 7** Refer to PIC 2 and 4. Ensure that the plastic bushing stays flush as the new Clutch Lever is installed; ensure that the clutch switch and clutch plunger are pressed in and do not bind as the new Lever is installed.

**STEP 8** Reinstall the pivot pin and secure with the snap-ring; compress the lever a few times to ensure that it is working properly BEFORE starting the motorcycle.

#### BRAKE SIDE

**STEP 9** Remove the snap-ring securing the brake lever pivot-pin in the perch assembly; set it aside for now it will be reused.

**STEP 10** Remove the two screws securing the outside half of the brake-side perch-clamp.

Secure the master cylinder/lever assembly as the screws are removed to prevent damage.

**STEP 11** With the master cylinder/lever assembly removed from the handlebar, remove the pivot pin and lever; set the pivot pin aside, it will be reused.

**STEP 12** Install the new Brake Lever in the reverse order the existing lever was removed.

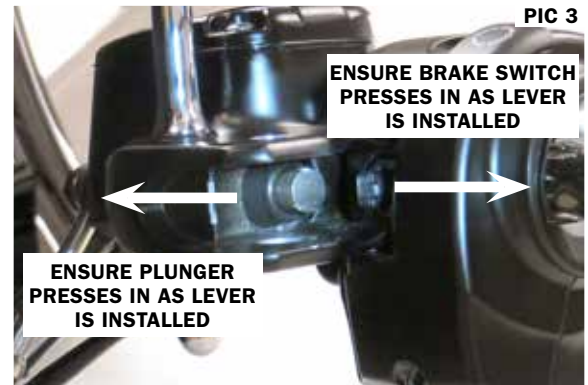
Ensure that the plastic bushing remains in the new Brake Lever as it is installed.

Ensure that the brake switch and brake plunger are compressed as the lever is installed.

**STEP 13** Compress the Brake Lever a few times to ensure that the brakes work properly BEFORE starting the motorcycle. Reinstall the main fuse.

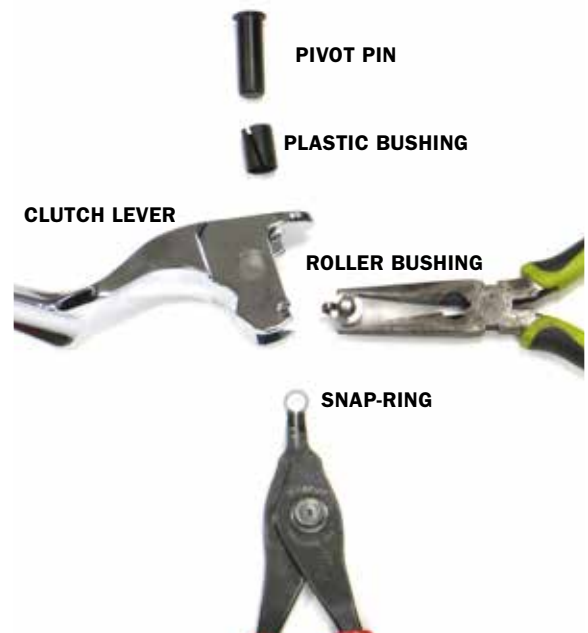
#### NOTICE

IT IS THE INSTALLER'S RESPONSIBILITY TO ENSURE THAT ALL OF THE FASTENERS (INCLUDING PRE-ASSEMBLED) ARE TIGHTENED BEFORE OPERATION OF THE MOTORCYCLE. KURYAKYN WILL NOT PROVIDE WARRANTY COVERAGE ON PRODUCTS OR COMPONENTS LOST DUE TO IMPROPER INSTALLATION OR LACK OF MAINTENANCE. PERIODIC INSPECTION AND MAINTENANCE ARE REQUIRED ON ALL FASTENERS.



CLUTCH-SIDE (LEFT)

PIC 4



## INSTALLATION INSTRUCTIONS

### TRIGGER LEVERS, GLOSS BLACK

1844

-CONTINUED-

#### LIMITED WARRANTY

Kuryakyn warrants that any Kuryakyn products sold hereunder, shall be free of defects in materials & workmanship for a period of one (1) year from the date of purchase by the consumer excepting the following provisions:

1. Kuryakyn shall have no obligation in the event the customer is unable to provide a receipt showing the date the customer purchased the product(s).
2. The product must be properly installed, maintained & operated under normal conditions.
3. Kuryakyn shall not be liable for any consequential & incidental damages, including labor & paint, resulting from failure of a Kuryakyn product, failure to deliver, delay in delivery, delivery in nonconforming condition, or for any breach of contract or duty between Kuryakyn & a customer.
4. Kuryakyn products are often intended for use in specific applications. Kuryakyn makes no warranty if a Kuryakyn product is used in applications other than intended.
5. Kuryakyn electrical products are warranted for one (1) year from the date of purchase by the consumer. L.E.D.'s contained in components of Kuryakyn products will be warranted for defects in materials & workmanship for 3 years from the date of purchase whereas all other components shall be warranted for one (1) year.
6. All warranty claims must be directed to the place of purchase. Merchandise sold through internet auction sites or any other unauthorized reseller shall not carry a Kuryakyn warranty. If unsure, please contact the place of purchase to verify they are an authorized Kuryakyn reseller.

#### RETURN POLICY

Merchandise determined to be defective may be returned up to one year from the date of purchase. Returns must be processed through original seller. Returned merchandise for any other reason other than warranty claims must be in like new condition & subject to a 20% restocking fee. All returns are subject to inspection for determination of full or partial credit. Any returned part that shows evidence of being used or installed contrary to manufacturer's instructions, &/or subjected to improper handling, packaging or return shipping by the customer, will not be eligible for exchange, refund or warranty consideration. All returned electrical items will be inspected & tested. If electrical item is deemed functional, no credit will be issued & item will be returned. All sales are final on discontinued or closeout merchandise.

#### ©2015 KURYAKYN HOLDINGS, LLC ALL RIGHTS RESERVED

KURYAKYN, KURYAKYN K logo and the marks appearing on this instruction sheet are registered and common law trademarks of Kuryakyn Holdings except noted third-party trademarks. A full listing of trademarks and trademark registrations owned by Kuryakyn Holdings can be found at [www.kuryakyn.com/legal-notice](http://www.kuryakyn.com/legal-notice).

Emissions Notice: The California Air Resources Board (CARB) does not permit the use of aftermarket emission-related parts(s) that alter the performance of OEM emission-related devices unless CARB has issued an Executive Order, other than on racing vehicles on closed courses. Check your local laws and manufacturer's information.

Listed Manufacturers and product model names are for reference only. All product and company names are trademarks or registered trademarks of their respective holders. Use of them does not imply any affiliation with or endorsement by them. All specifications are subject to change without notice.

For additional information on third-party product and company names, please consult our Web page at [www.kuryakyn.com/legal-notice](http://www.kuryakyn.com/legal-notice)