



© 2020–2023

by S&S® Cycle, Inc.

All rights reserved.
Printed in the U.S.A.

Installation Instructions: Broadhead Slashcut and Fishtail Exhaust for Indian® Touring Models

DISCLAIMER:

Qualified manufacturer declared U.S. 50-State legal emissions replacement part on Indian Challenger and Chieftain models 2020-'22.

Prop 65 Status:



WARNING

This product can expose you to chemicals, including nickel, which is known to the State of California to cause cancer and birth defects or other reproductive harm.

IMPORTANT NOTICE:

Statements in this instruction sheet preceded by the following words are of special significance.



WARNING

Means there is the possibility of injury to yourself or others.



CAUTION

Means there is the possibility of damage to the part or motorcycle.

NOTE

Other information of particular importance has been placed in italic type.

S&S recommends you take special notice of these items.

SAFE INSTALLATION AND OPERATION RULES:

Before installing your new S&S part, it is your responsibility to read and follow the installation and maintenance procedures in these instructions and follow the basic rules below for your personal safety.

- Gasoline is extremely flammable and explosive under certain conditions and toxic when breathed. Do not smoke. Perform installation in a well ventilated area away from open flames or sparks.
- If motorcycle has been running, wait until engine and exhaust pipes have cooled down to avoid getting burned before performing any installation steps.
- Before performing any installation steps, disconnect battery to eliminate potential sparks and inadvertent engagement of starter while working on electrical components.
- Read instructions thoroughly and carefully so all procedures are completely understood before performing any installation steps. Contact S&S with any questions you may have if any steps are unclear or any abnormalities occur during installation or operation of motorcycle with an S&S part on it.
- Consult an appropriate service manual for your motorcycle for correct disassembly and reassembly procedures for any parts that need to be removed to facilitate installation.
- Use good judgment when performing installation and operating motorcycle. Good judgment begins with a clear head. Don't let alcohol, drugs or fatigue impair your judgment. Start installation when you are fresh.
- Be sure all federal, state and local laws are obeyed with the installation.
- For optimum performance and safety and to minimize potential damage to carb or other components, use all mounting hardware that is provided and follow all installation instructions.
- Motorcycle exhaust fumes are toxic and poisonous and must not be breathed. Run motorcycle in a well ventilated area where fumes can dissipate.

WARRANTY:

All S&S parts are guaranteed to the original purchaser to be free of manufacturing defects in materials and workmanship for a period of twelve (12) months from the date of purchase. Merchandise that fails to conform to these conditions will be repaired or replaced at S&S's option if the parts are returned to us by the purchaser within the 12 month warranty period or within 10 days thereafter.

In the event warranty service is required, the original purchaser must call or write S&S immediately with the problem. Some problems can be rectified by a telephone call and need no further course of action.

A part that is suspect of being defective must not be replaced by a Dealer without prior authorization from S&S. If it is deemed necessary for S&S to make an evaluation to determine whether the part was defective, a return authorization number must be obtained from S&S. The parts must be packaged properly so as to not cause further damage and be returned prepaid to S&S with a copy of the original invoice of purchase and a detailed letter outlining the nature of the problem, how the part was used and the circumstances at the time of failure. If after an evaluation has been made by S&S and the part was found to be defective, repair, replacement or refund will be granted.

ADDITIONAL WARRANTY PROVISIONS:

- (1) S&S shall have no obligation in the event an S&S part is modified by any other person or organization.
- (2) S&S shall have no obligation if an S&S part becomes defective in whole or in part as a result of improper installation, improper maintenance, improper use, abnormal operation, or any other misuse or mistreatment of the S&S part.
- (3) S&S shall not be liable for any consequential or incidental damages resulting from the failure of an S&S part, the breach of any warranties, the failure to deliver, delay in delivery, delivery in non-conforming condition, or for any other breach of contract or duty between S&S and a customer.

HELPFUL HINTS TO MAINTAIN FINISH OF EXHAUST PIPES AND MUFFLERS

- Air filters must be serviced at regular intervals.
- Intake air leaks can cause engine to run lean and overheat, and thus discolor pipes.
- Make sure there are no exhaust leaks at the junction of the cylinder head and the exhaust pipe.
- Avoid long periods of idling.
- Avoid the use of pressure washers, harsh chemicals or abrasive cleaners. If water gets into muffler during washing, remove moisture to prevent corrosion. Start engine to warm up exhaust system.

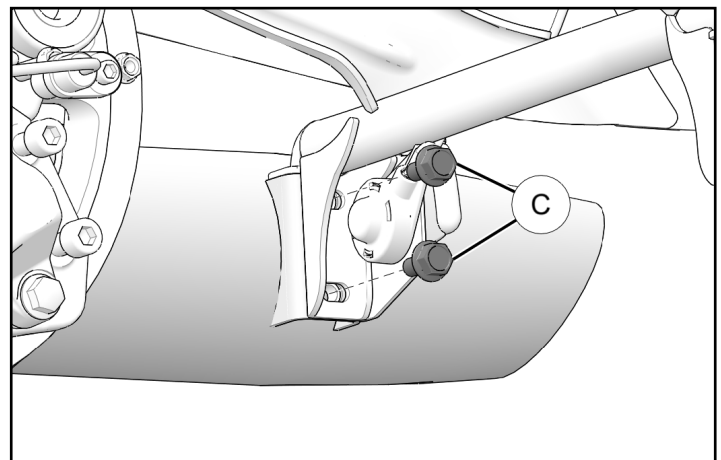
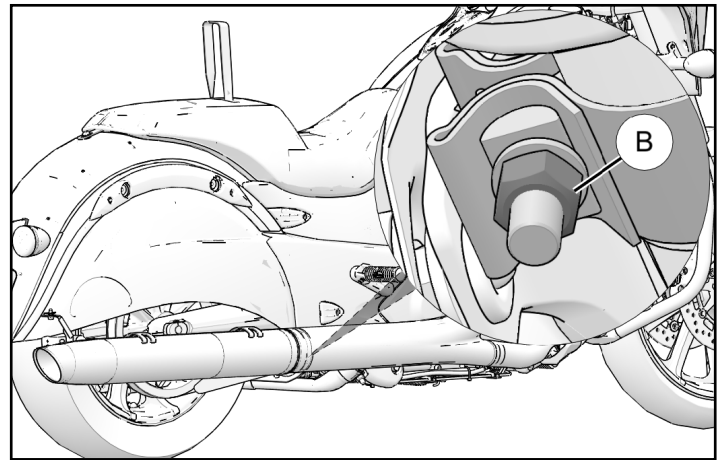
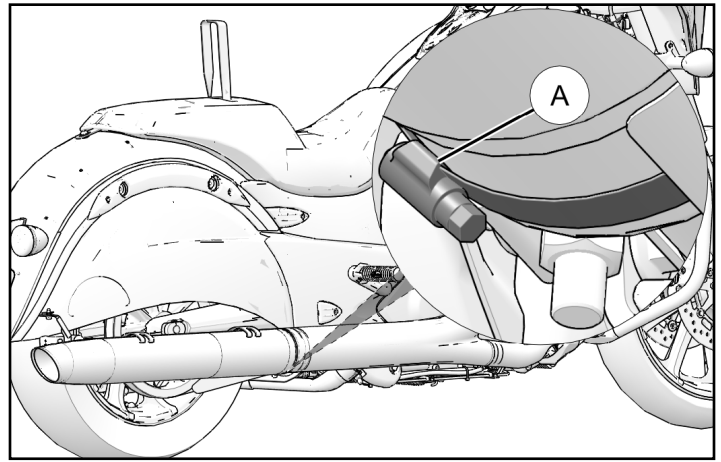
Tools Needed:

- 1/4" Socket or Straight Screw Driver
- 15mm Deep Socket
- 13mm Socket

Procedure:

NOTE - The following installation procedure assumes that a stock exhaust system is being removed. If the bike you are working on has something other than the factory exhaust system, you may need to source some of the fasteners listed below.

1. Remove saddlebags (if equipped) as per owner's manual.
2. Using a 1/4" socket or a straight screwdriver, loosen screw clamp "A" on both rear muffler heat shields.
3. With the 15mm socket, loosen the muffler clamp nuts "B" at the front of both mufflers.
4. Using the 13mm socket, remove and retain two screws "C" from each muffler mount.
5. Slide muffler assemblies rearward to remove.
6. Transfer muffler clamps from stock mufflers to new mufflers in the same orientation as on the stock mufflers.
7. Slide new mufflers onto rear head pipe and loosely install two retained screws "C" in each muffler bracket. DO NOT torque fasteners at this time.
8. Adjust clamps into place and tighten just until it stays as positioned.
9. Align mufflers and tighten hardware, beginning with the OEM bolts on the mounting brackets to 15-18 lb/ft. followed by the clamps. Torque spec. for OEM clamps is 40-45 Ft./Lbs. NOTE: Visually check alignment while you tighten the hardware. Make sure the mufflers are even when viewed from the back of the motorcycle.
10. Position heat shield and tighten screw clamp to 36 in-lbs.
11. Reinstall saddlebags (if equipped) as per owner's manual procedure.
12. Before operating the motorcycle, clean the heat shields and mufflers. Any oil or fingerprints will permanently burn into the coating if not removed.
13. Check all mounting hardware to be sure it is tight before and after first operation of motorcycle. Periodically, check tightness of all mounting hardware.



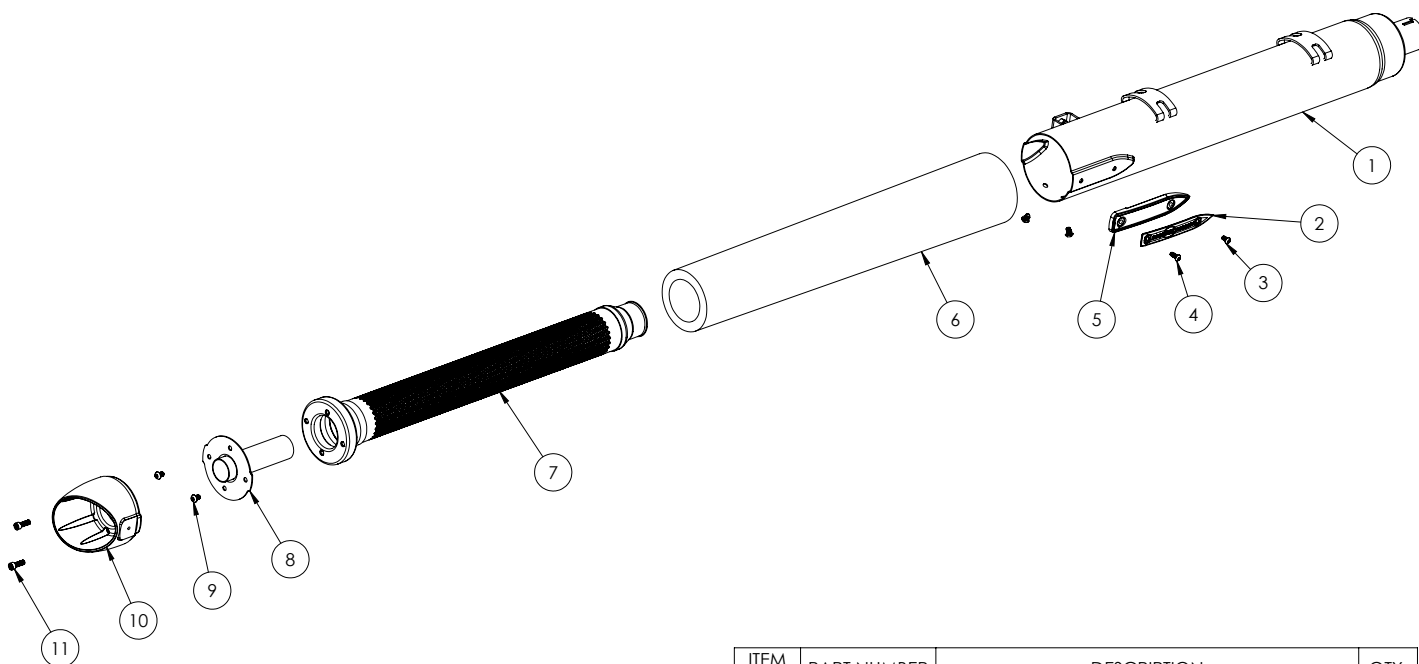
USE AND CARE:

Wash the exhaust system with the same care you use when washing your motorcycle. Use mild soap and water. DO NOT use harsh chemicals, abrasive cleaners or high pressure washers.

NOTE:

If equipped, ensure antenna and antenna mounts are secure when removing and reattached when assembling.

MUFFLER ASSEMBLY P/N	MUFFLER ASSEMBLY DESCRIPTION	ITEM "A" SHELL P/N	ITEM "A" SHELL DESCRIPTION	ITEM "B" BADGE P/N	ITEM "B" BADGE DESCRIPTION
551-0884A	MUFFLER, ASSEMBLY, RIGHT, SLASHCUT, BLACK, INDIAN® TOURING	551-1093A	SHELL, RIGHT, MUFFLER, BLACK, INDIAN® TOURING	551-1882	BADGE, RIGHT, S&S® LOGO, W/ BOLT HOLES 3.82" APART, INDIAN® TOURING
551-0885A	MUFFLER, ASSEMBLY, LEFT, SLASHCUT, BLACK, INDIAN® TOURING	551-1094A	SHELL, LEFT, MUFFLER, BLACK, INDIAN® TOURING	551-1883	BADGE, LEFT, S&S® LOGO, W/ BOLT HOLES 3.82" APART, INDIAN® TOURING
551-1891	MUFFLER, ASSEMBLY, RIGHT, SLASHCUT, CHROME, INDIAN® TOURING	551-0880A	SHELL, RIGHT, MUFFLER, OUTSIDE PROCESS, CHROME, INDIAN® TOURING	551-1882	BADGE, RIGHT, S&S® LOGO, W/ BOLT HOLES 3.82" APART, INDIAN® TOURING
551-1892	MUFFLER, ASSEMBLY, LEFT, SLASHCUT, CHROME, INDIAN® TOURING	551-0881A	SHELL, LEFT, MUFFLER, OUTSIDE PROCESS, CHROME, INDIAN® TOURING	551-1883	BADGE, LEFT, S&S® LOGO, W/ BOLT HOLES 3.82" APART, INDIAN® TOURING



ITEM NO.	PART NUMBER	DESCRIPTION	QTY.
1	SHELL ITEM "A"	SHELL ITEM "A" DESCRIPTION - SEE P/N CHART	1
2	BADGE ITEM "B"	BADGE ITEM "B" DESCRIPTION - SEE P/N CHART	1
3	500-1259	SCREW, BHC, HIGH TEMP LOCK PATCH, M5 X 10mm, POLISHED, STAINLESS STEEL	1
4	500-1260	SCREW, BHC, HIGH TEMP LOCK PATCH, M5 X 14mm, POLISHED, STAINLESS STEEL	1
5	551-1303	CAP, END, MUFFLER, BOLT ON, POWDERCOATED, 4", BLACK	1
6	551-0798	INSULATION, MUFFLER, PILLOW PACK, CONE BODY, 24"L X 2.5" DIA BAFFLE	1
7	551-0877A	BAFFLE, ASSEMBLY, 2020 INDIAN® RAPTOR®	1
8	551-1228	BAFFLE, ASSEMBLY, MUFFLER, 4", SAE J2825, POLARIS® MUSTANG	1
9	500-0441	SCREW, BHC, HIGH TEMP LOCK PATCH, 1/4-20 X 3/8", STAINLESS STEEL	4
10	551-1279	CAP, END, MUFFLER, SLASHCUT, POWDERCOATED, 4", BLACK	1
11	500-1258	SCREW, SHC, HIGH TEMP LOCK PATCH, M6 X 20mm, STAINLESS STEEL	2

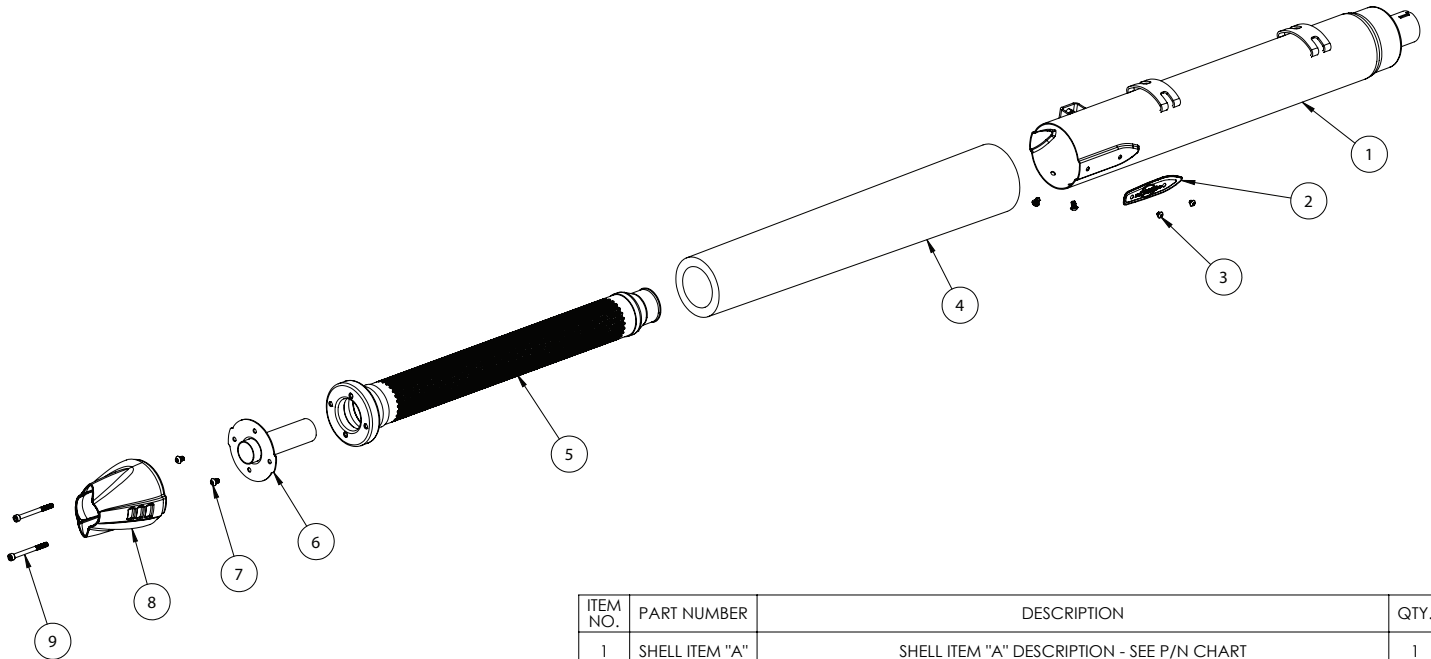
USE AND CARE:

Wash the exhaust system with the same care you use when washing your motorcycle. Use mild soap and water. DO NOT use harsh chemicals, abrasive cleaners or high pressure washers.

NOTE:

If equipped, ensure antenna and antenna mounts are secure when removing and reattached when assembling.

MUFFLER ASSEMBLY	MUFFLER ASSEMBLY DESCRIPTION	ITEM "A" SHELL P/N	ITEM "A" SHELL DESCRIPTION	ITEM "B" BADGE P/N	ITEM "B" BADGE DESCRIPTION
551-0882A	MUFFLER, ASSEMBLY, RIGHT, FISHTAIL, CHROME, INDIAN® TOURING	551-0880A	SHELL, RIGHT, MUFFLER, OUTSIDE PROCESS, CHROME, INDIAN® TOURING	551-1884	BADGE, RIGHT, S&S® LOGO, W/ BOLT HOLES 2.6" APART, INDIAN® TOURING
551-0883A	MUFFLER, ASSEMBLY, LEFT, FISHTAIL, CHROME, INDIAN® TOURING	551-0881A	SHELL, LEFT, MUFFLER, OUTSIDE PROCESS, CHROME, INDIAN® TOURING	551-1885	BADGE, LEFT, S&S® LOGO, W/ BOLT HOLES 2.6" APART, INDIAN® TOURING



ITEM NO.	PART NUMBER	DESCRIPTION	QTY.
1	SHELL ITEM "A"	SHELL ITEM "A" DESCRIPTION - SEE P/N CHART	1
2	BADGE ITEM "B"	BADGE ITEM "B" DESCRIPTION - SEE P/N CHART	1
3	500-1261	SCREW, BHC, HIGH TEMP LOCK PATCH, M5 X 5mm, POLISHED, STAINLESS STEEL	2
4	551-0798	INSULATION, MUFFLER, PILLOW PACK, CONE BODY, 24"L X 2.5" DIA BAFFLE	1
5	551-0877A	BAFFLE, ASSEMBLY, 2020 INDIAN® RAPTOR®	1
6	551-1228	BAFFLE, ASSEMBLY, MUFFLER, 4", SAE J2825, POLARIS® MUSTANG	1
7	500-0441	SCREW, BHC, HIGH TEMP LOCK PATCH, 1/4-20 X 3/8", STAINLESS STEEL	4
8	551-1277	CAP, END, MUFFLER, FISHTAIL, 4", CHROME	1
9	500-1257	SCREW, SHC, HIGH TEMP LOCK PATCH, M6 X 70mm, STAINLESS STEEL	2