

## USER GUIDE & INSTALLATION INSTRUCTIONS

**DESCRIPTION:** S-RT Mini Fairing Lower

**PART NUMBER:** Saddlemen 806-04-15590

**FITMENT:** H-D® Dyna® models 2006-2017

Drag Specialties 2330-0328

*Will not fit: Wide Glide or any forward foot controls*

**NOTE:** This Fairing Lower kit is intended to work as an addition to the Saddlemen S-RT Mini Fairing only.

Any application other than this is considered custom and these instructions do not apply. **PATENT PENDING**

### OVERVIEW:

Fairing Lower add style and wind protection to bikes already equipped with the Saddlemen S-RT Mini Fairing.

- Durable ABS construction with a gloss black painted finish.
- Direct fit bolt-on installation, with no modifications to bike required.

### IMPORTANT:

Please read these instructions completely before starting installation. All “NOTE,” “CAUTION” and “WARNING” notations are serious safety issues and should be read carefully. Possible injury to riders or damage to the motorcycle and/or accessory may result if improperly installed.

### NOTICE TO DEALERS:

These instructions contain important information for future reference and should be given to the customer.

### ⚠ WARNING:

 California Proposition 65 Warning

**WARNING:** This product contains chemicals known to the State of California to cause cancer and birth defects or other reproductive harm. For more information: [www.P65/Warnings.ca.gov](http://www.P65/Warnings.ca.gov)

**READ THESE INSTRUCTIONS THOROUGHLY BEFORE INSTALLATION!**

This is a specific fit accessory and is only meant to fit certain motorcycle models. You are responsible for the proper installation of this accessory on your motorcycle. Your attention to these installation instructions, any additional specific instructions and recommendations will permit the safe and proper use of this accessory. You must mount this accessory properly and securely before riding your motorcycle. If you lack the ability to safely and properly install this accessory, seek out a qualified motorcycle technician for assistance. During installation, you may need to support the motorcycle with a suitable stand or lift so it will not tip over and injure you, or damage the vehicle. Using or mounting this accessory improperly could result in a loss of control of the motorcycle which could result in damage to your motorcycle or other personal property, the property of third parties, and/or personal injury to yourself or others, up to and including death.

**BE SURE TO THOROUGHLY READ AND CLOSELY FOLLOW THE MOUNTING INSTRUCTIONS THAT ARE INCLUDED WITH THIS ACCESSORY.**

- If you do not understand these instructions **DO NOT** mount this accessory, and remove any related components you may have already installed on your motorcycle.
- Thoroughly inspect your motorcycle and all accessories before every ride. Do not use this fairing if its mounting system has been modified, has deteriorated, loosened or is beginning to fail.
- Continually check the security of this and all other accessories at each stop as you ride. Items attached to your motorcycle can loosen during operation, so be sure to check them frequently.
- Do not use this fairing if you have any doubts as to whether it is properly mounted to your motorcycle. You must be sure that the installation of the accessory will not damage your motorcycle's painted or plated parts. Saddlemen is not responsible if you or your technician mount this accessory and it damages your motorcycle for any reason.
- When using any accessory, do not exceed your vehicle's Maximum Gross Vehicle Weight as listed on your motorcycle or in the manufacturer's owner's manual.
- If this accessory is ever damaged, remove it and do not use it until it has been inspected by your local professional motorcycle dealer. Replace any mounting part immediately if it has sustained damage that will prevent it from being properly secured to your motorcycle.

**DO NOT ATTEMPT TO USE THIS ACCESSORY FAIRING IF:**

- You do not understand these installation and use instructions;
- You do not understand any part of this accessory's mounting system;
- You have any doubts as to the security of the mounting system.
- If you have any concerns or questions, seek help at your qualified motorcycle dealer or call the Saddlemen support line at (310) 638-1222.

## ⚠ WARNING:

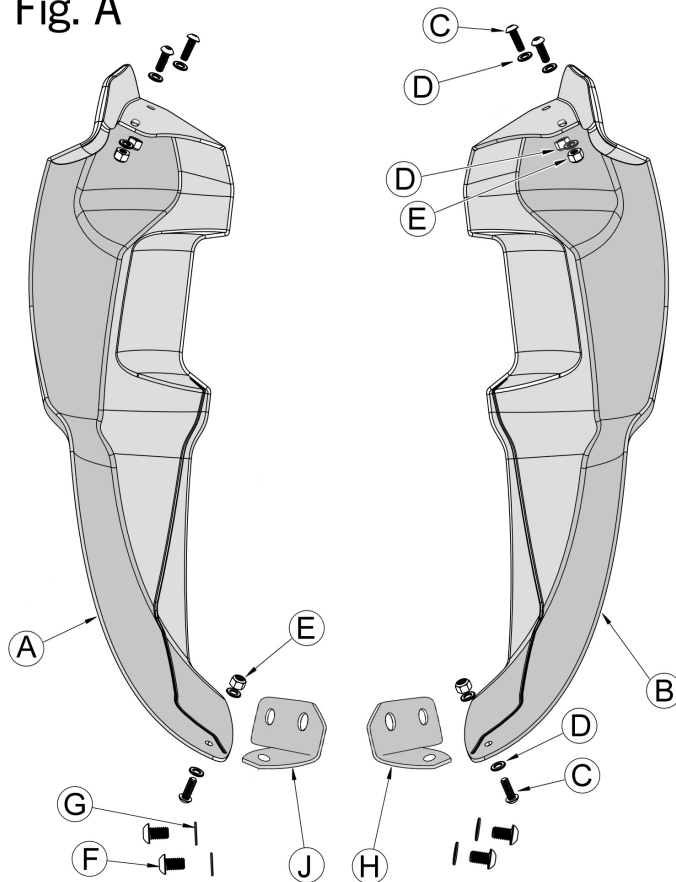
Remember: Motorcycling can be a dangerous activity. Installation of any accessory can increase your risk if it is not installed properly. You are responsible to install this accessory so it will not contact any portion of the drive train, suspension or steering, or if it will in any way interfere with the operation of your motorcycle.

This Fairing Lower kit is an add-on to the Saddlemen S-RT Mini Fairing, which must already be installed on your motorcycle. For more information please visit [Saddlemen.com](http://Saddlemen.com) or call 800-397-7709.

To avoid injury, install while engine is cold.

## CONTENTS / PARTS INCLUDED:

Fig. A



### S-RT FAIRING LOWERS COMPLETE KIT

<i>Qty</i>	<i>Item</i>
(A)	1 S-RT Fairing Lower, right side
(B)	1 S-RT Fairing Lower, left side
(C)	6 1/4-20 x 3/4" buttonhead cap screw
(D)	12 1/4" washer
(E)	6 1/4-20 locknut
(F)	4 3/8-16 x 5/8" buttonhead cap screw
(G)	4 3/8" washer
(H)	1 Lower Fairing Bracket, left
(J)	1 Lower Fairing Bracket, right

## INSTALLATION:

### INSTALLATION

1. Begin with the left side (clutch side). Using 3/8-16 screws (F) and corresponding washers (G), attach the metal Lower Fairing Bracket (H) to the forward foot control mounting location on the bike's frame (see Fig. A). Tighten these to 20 lb/ft.
2. Loosely fit the left side Fairing Lower between the S-RT Mini Fairing and the Lower Fairing Bracket. There will be a thin protective foam tape mounted on the top side of the Fairing Lower. Locate the two holes in the lower part of your S-RT Mini Fairing and align them with the holes in the top of the Fairing Lower.
3. Using two 1/4-20 screws (C) with corresponding washers (D) and locknut (E), loosely attach the top of the Fairing Lower to the bottom of your S-RT Mini Fairing.
4. Using one 1/4-20 screw (C) with corresponding washers (D) and locknut (E), install the bottom of the Fairing Lower to the Lower Fairing Bracket.
5. Once the Fairing Lower is in place to your liking, tighten all of the fairing hardware to 5 lb/ft. Do not overtighten as it may damage the fairing components.

**REPEAT THIS PROCEDURE ON THE RIGHT SIDE**

11-400483 S-RT Fairing Lower, Dyna 06-17 (11-2024)

## INSTALLATION *(continued)*

- Re-read these instructions, making sure all fasteners are secure.

### FINAL CHECKLIST

- Check all clearances for handlebars, mirrors, front wheel, etc. at both left and right steering stops as well as your forks' full compression.

## **⚠ WARNING:**

- It is vital that you verify that this accessory and/or any of its parts will not touch, or interfere with other components while the suspension and steering move through their entire range of motion. Make sure that neither the upper or lower fairing, nor their mounting hardware, interfere with any other parts of the motorcycle in the course of operation, as damage could occur.
- The configuration of this accessory fairing with certain motorcycles may require relocation and/or adjustment of certain components on these vehicles, including handlebars, mirrors, and lights. Check to be sure that all lights, turn signals, mirrors and safety reflectors are in place once the fairing is installed. If the fairing installation blocks or interferes with the turn signals, you will need to move the turn signals to another mounting point that permits their proper electrical function and visibility. If the fairing or mounting hardware blocks any side reflectors, place new reflectors on the exterior sides of the fairing. Reflectors with self-adhesive backing are available from motorcycle or automobile supply stores. It is your responsibility to make sure that the installation of this accessory does not create an unsafe or illegal condition.
- Improperly installed or loose hardware can allow the fairing to move. Before riding, visually check the clearance between the fairing and any moving parts that could impair normal operation of the motorcycle.
- Improperly installed or loose hardware can allow the fairing to move. Before riding, visually check the clearance between the fairing and any moving parts that could impair normal operation of the motorcycle.

## **CAUTION:**

It is your responsibility to make sure this accessory installation does not create an unsafe or illegal situation. Remember that this is a custom accessory. You must check the installation to determine if it will be safe for you to operate the motorcycle safely and legally. You must also ensure that the installation does not damage your vehicle in any way.

After 50 miles (80 kilometers), recheck all of the fairing mounting hardware and the fairing to make sure they are still tight and secure. Loose hardware can cause the fairing to interfere with the vehicle's operation and can cause an unsafe riding condition. After that, check fastener tightness during each regular maintenance check.

## LIMITED WARRANTY POLICY

**SADDLEMEN LIMITED ONE-YEAR WARRANTY** Saddlemen warrants its products for defects in materials, design or workmanship for a period of one year after retail purchase. Items that are defective will be repaired or replaced by Saddlemen at its sole discretion. Damage caused by improper use or improper installation is not a defect; therefore repair, replacement or shipping of a damaged accessory will not be covered under this warranty. This limited warranty contains other provisions and conditions, so please refer to the Warranty Policy that was provided with your Saddlemen product or visit [www.saddlemen.com](http://www.saddlemen.com) for additional information. You can count on Saddlemen's quality, innovation, service and style. If for any reason you are not satisfied with the performance of your Saddlemen accessory, please contact the Saddlemen support line at (310) 638-1222.

11-400483 S-RT Fairing Lower, Dyna 06-17 (11-2024)