

COMPATIBILITY

Fits all 2014 through 2022 Street Glide, Road Glide (2015 to 2023), Road King, and Ultra models with

non-speaker lids and hard saddlebags.

Also fits all non-CVO 2023 models. Will not work with factory equipped electric lid locks.

WARNING: Prepare the necessary tools and materials and identify the parts of the kit.

During the cutting phase, we recommend completely removing the saddlebags. However, it is possible to keep the lids on the bags to speed up the installation of the speaker mounts.

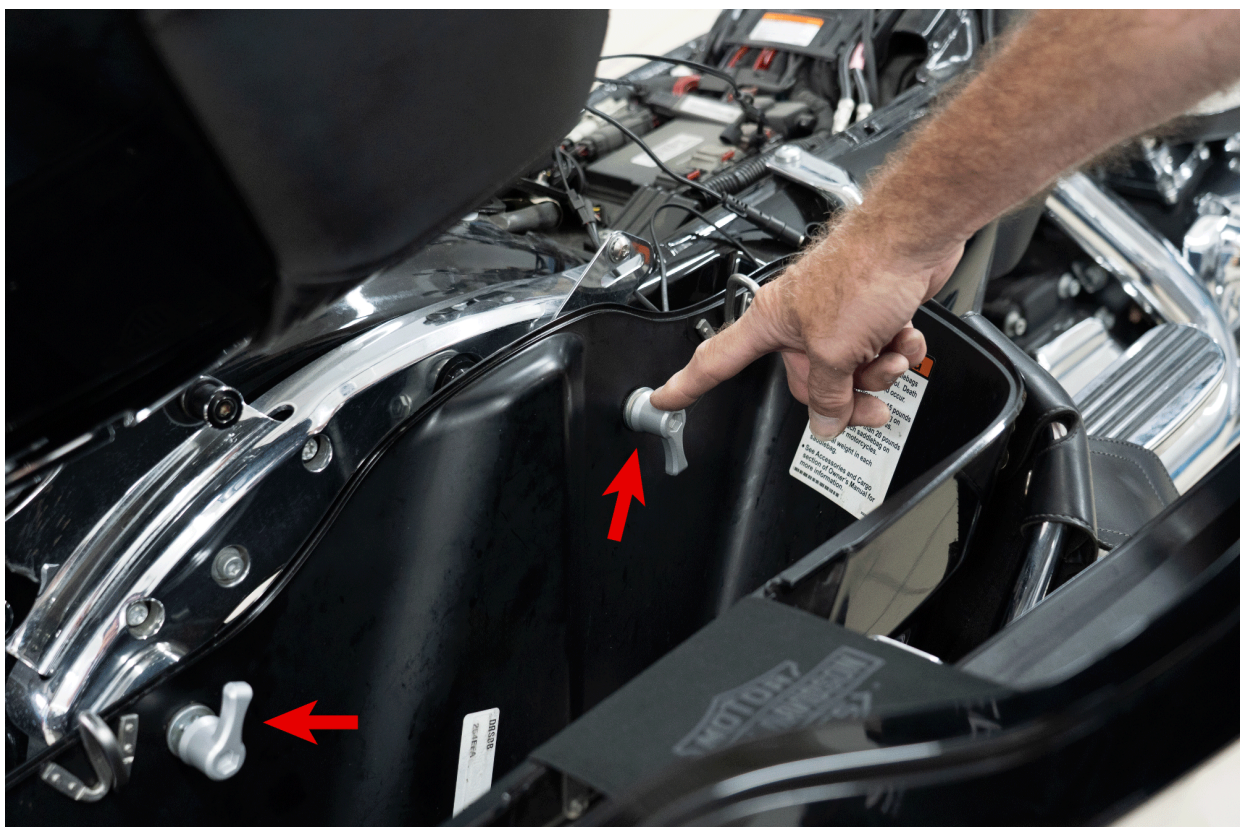
Prepare a clean and soft surface to place the bags on during installation.

Identify the path and position of each wiring component before starting.

5.1 REMOVAL OF THE BAGS

WARNING: Perform the steps shown in the following paragraphs on both sides of the motorcycle.

5.1.1 To remove the bags, open the lid and unscrew the two lever bolts indicated by the arrows.





5.1.2 To facilitate the wiring, unfasten and remove the side cover by pulling it towards you as shown in the image.





5.2 REMOVAL OF THE BAG LID

5.2.1 Unscrew the two screws securing the fabric hinge cover to expose the screws holding the hinge.



5.2.2 Unscrew the three screws to unfasten the lid from the bag.



5.3 REMOVAL OF ACCESSORIES

5.3.1 Unscrew the screws indicated in the image to remove the reflector.



5.3.2 Unscrew the four screws indicated by the arrows.



5.3.3 Remove the two screws and carefully detach the two edges of the seal using a cutter to free the hinge.





5.3.4 At this point, the hinge can be removed.



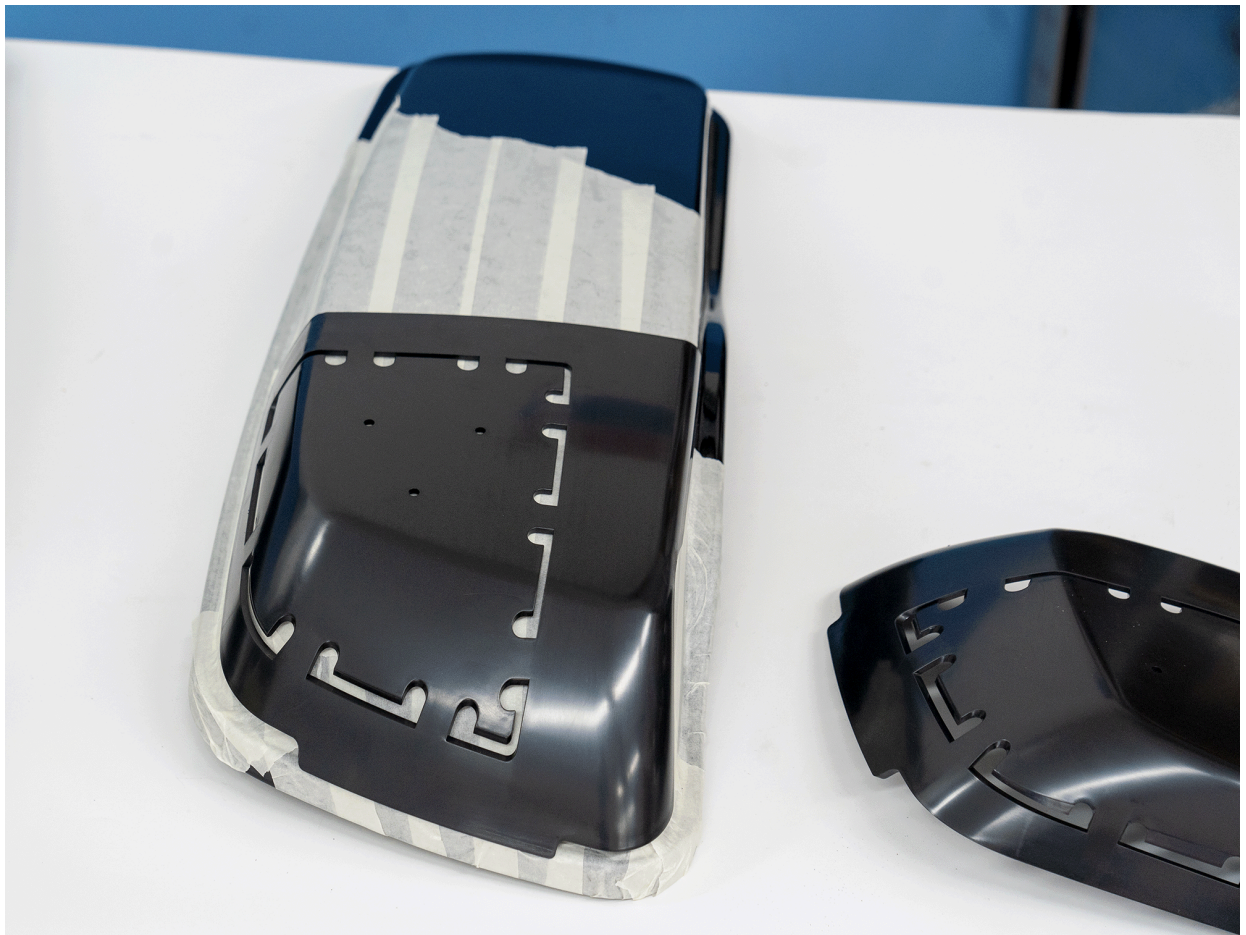
5.4 MASKING

5.4.1 Use masking tape to protect the entire area where the cutting template will be placed. (We recommend applying tape over a larger area to avoid contact between the jigsaw and the paint.) Apply the tape evenly to ensure the template adheres properly to the lid.



5.5 MOUNTING THE DRILL TEMPLATE

5.5.1 After applying the tape, position the drilling template on the lid and ensure it adheres well. At the center of each template, there are three holes for fixing screws. Use a 3mm drill bit to create pilot holes on the lid and secure each template with the provided screws (6-piece pack).



5.6 DRILLING THE TEMPLATE

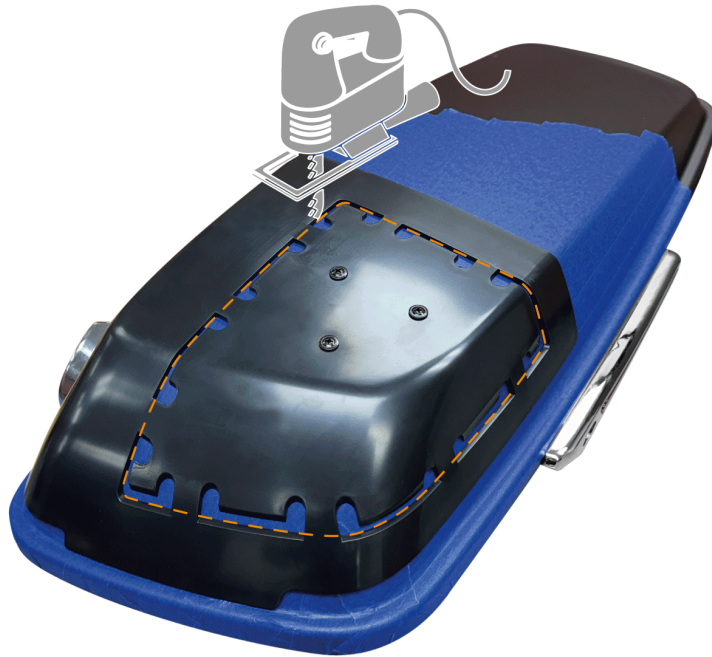
5.6.1 Using a 10mm drill bit or a step drill, create an initial hole in each segment for cutting with the jigsaw.



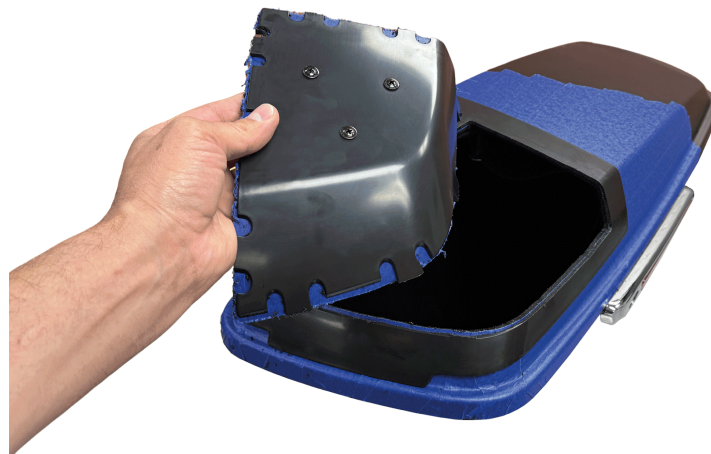
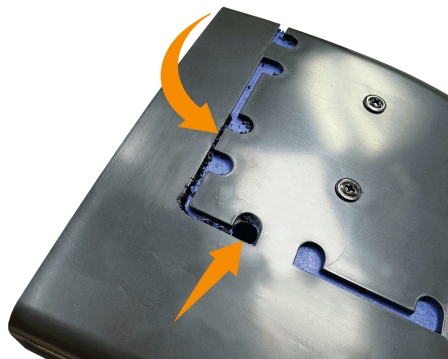
5.7 CUTTING PHASE

Quick Tips:

1. Choose the right blade.
2. Adjust the orbital motion of the jigsaw blade.
3. Adjust the speed of the jigsaw to prevent melting the plastic.
4. Ensure there is nothing inside the bag to avoid damaging your items (if installing with the bag mounted).
5. If the jigsaw cannot easily turn at corners, restart the cut from the next hole.



5.7.1 Follow the cut line around the drilling template (see the dashed orange line in the image above), cutting through the plastic tabs as you go. The kit allows for some tolerance in the cut, so precision is not critical. **However, a perfect cut will allow the central part to be removed without trimming.**



Be careful not to let the tool jump out to avoid damaging the cover. Using a variable-speed jigsaw is essential for good control.

5.7.2 With the tape still in place, sand or file the cut edges as needed for a perfect fit for the speaker mount.

5.7.3 Use a vacuum cleaner to remove all debris generated by the cutting and cleaning process.

5.7.4 Remove the masking tape.

5.8 INSTALLING THE GRILLE AND SPEAKER MOUNT

5.8.1 Using the provided metric screws (8-piece pack), sandwich the top grille and lower speaker mount together (see the image below).

WARNING: We recommend using a manual screwdriver for this operation. Do not use a power tool to avoid damaging the screw threads.



5.8.2 Carefully attach the 6x9 adhesive gasket to the speaker mount to prevent water infiltration.



5.9 MOUNTING THE SPEAKERS

5.9.1 Use the 8 provided screws to secure the HERTZ SX 690 Neo.1 speakers to the lid. Position the speakers so that the terminals face the rear of the motorcycle.



5.10 REASSEMBLY

WARNING: Pay close attention to these steps to avoid water infiltration.

5.10.1 Reassemble all previously removed accessories in reverse order.

5.10.2 After reinstalling the hinge, properly glue the two edges of the gasket onto it.



5.11 INSTALLING THE GROMMET

5.11.1 Drill a 16mm hole in the saddlebag for the speaker wire grommet. Ensure the hole is positioned far enough from the front latch to prevent the wiring from interfering with the latch handle.

5.11.2 Temporarily remove the rubber grommet from the wiring and place it as shown in the image. Drill a pilot hole with a 3mm drill bit.



5.11.3 Enlarge the hole with a 15/16mm drill bit, reinstall the grommet on the wiring, and pass it through the hole.



5.11.4 Secure the grommet with a cable tie to prevent the wiring from slipping out.



5.12 CONNECTING THE SPEAKERS.

5.12.1 Connect the wiring to the HERTZ SX 690 Neo.1 speakers, ensuring the polarities are correct.



5.12.2 Route the wiring as shown in the image below to avoid obstructing the lid's proper opening. Secure it to the front of the lid strap using adhesive cable tie mounts (not included in the kit). Use two additional cable tie mounts to secure the wiring around the front side of the bag to the exit point.



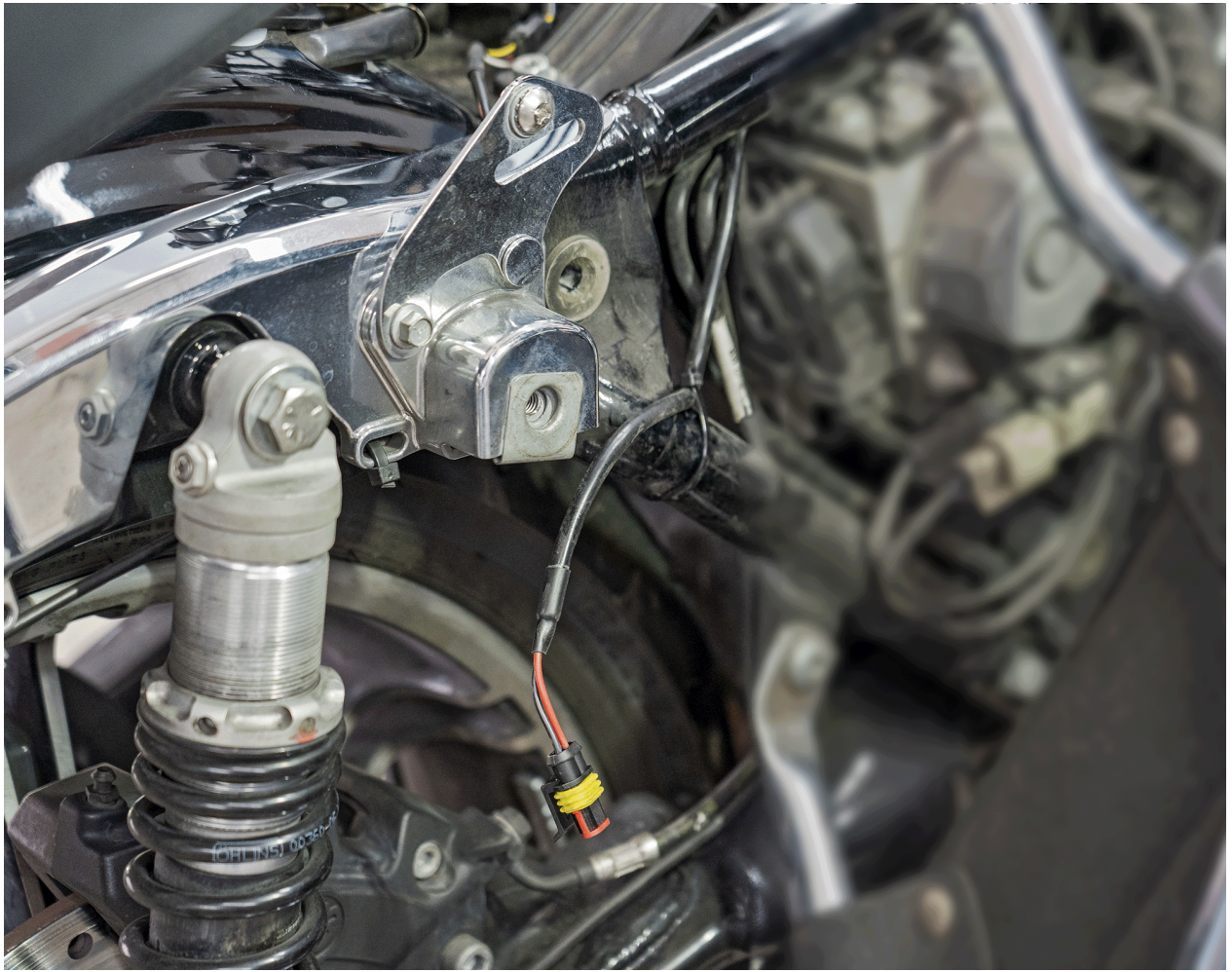
5.13 INSTALLING THE Y-HARNESS.

5.13.1 Place the Y-harness on the motorcycle with the 4-pin connector under the seat (previously installed), ensuring it is positioned to avoid interference or crushing. Route each female 2-pin end of the Y-harness to each saddlebag. You may need to unscrew the fuse block on the clutch side of the motorcycle to properly position the speaker cable.

WARNING: Do not route the speaker wires over the motorcycle frame where the seat rests.



5.13.2 Connect the Y-harness to the saddlebag. Pay attention to the wiring path on the motorcycle and where it will end up during riding. Ensure that the speaker wires do not come into contact with hot or moving parts of the motorcycle.



5.13.3 Secure the Y-harness with cable ties, leaving one end unfixed for the bag, ensuring it is easily accessible but also allows for neat cable management.

5.14 REINSTALLING THE BAGS

5.14.1 At this point, you can reinstall the saddlebags and all other previously removed parts to complete the installation.

WARNING: Ensure that all installed parts do not obstruct the proper functioning of the motorcycle.