



# INSTALLATION

## RELOCATOR BRACKETS

## 7528

### PARTS INCLUDED

- 1 Left Rear Bracket
- 1 Left Front Bracket
- 1 Right Rear Bracket
- 1 Right Front Bracket
- 1 Hardware Kit Containing:
  - 4 1/4"-20 X 1-1/4" Shoulder Bolts
  - 4 1/4"-20 Nylon Nuts
  - 4 #10-32 Set Screws
  - 8 1/4" Flat Washers
- 1 Installation Instructions

Please read and understand entire instructions before starting installation.

### THANK YOU FOR CHOOSING KÜRYAKYN!

**IN ORDER TO PROTECT YOU AND OTHERS FROM POSSIBLE INJURY AND/OR PROPERTY DAMAGE OR LOSS, PLEASE PAY CLOSE ATTENTION TO ALL INSTRUCTIONS, WARNINGS, CAUTIONS AND NOTICES REGARDING THE USE AND CARE OF THIS PRODUCT.**

#### **WARNING**

**THIS INDICATION ALERTS YOU TO THE FACT THAT IGNORING THE CONTENTS DESCRIBED HEREIN CAN RESULT IN POTENTIAL DEATH OR SERIOUS INJURY.**

#### **NOTICE**

**This indication alerts you to the fact that ignoring the contents described herein may negatively affect product performance and functionality.**

#### **NOTICE**

**IF INSTALLING THIS PRODUCT FOR ANOTHER PARTY, PLEASE MAKE SURE THEY RECEIVE THIS COPY OF THE INSTALLATION INSTRUCTIONS SO THEY ARE AWARE OF THE IMPORTANT INFORMATION CONTAINED IN THEM.**

### TOOLS SUGGESTED

Set of Hex Wrenches, Combination Wrenches or Socket Set and Ratchet

**STRICTLY OBSERVE THE FOLLOWING GUIDELINES IN ORDER TO USE THE PRODUCT PROPERLY AND AVOID POTENTIALLY DANGEROUS ACCIDENTS.**

**STEP 1** Read and understand all steps in the instructions before starting the installation. Park the motorcycle on a hard, level surface and turn off the ignition. Let cool.

#### **WARNING**

**YOU WILL BE WORKING AROUND THE ENGINE AND EXHAUST SYSTEM DURING INSTALLATION. ENSURE THAT THE ENGINE AND EXHAUST SYSTEM HAVE FULLY COOLED TO PREVENT INJURY.**

**STEP 2** Remove the right side (sitting on the bike) driver floorboard from the mounting brackets. Keep the hardware; it will be used later.

-cont.-

7528-22HD-0113



### CUSTOMER SERVICE

877.370.3604 (toll free)

### INSTALLATION QUESTIONS

techsupport@kuryakyn.com  
or call 715.247.2983

### LIMITED WARRANTY

Kuryakyn warrants that any Kuryakyn products sold hereunder, shall be free of defects in materials and workmanship for a period of one (1) year from the date of purchase by the consumer excepting the following provisions:

- Kuryakyn shall have no obligation in the event the customer is unable to provide a receipt showing the date the customer purchased the product(s).
- The product must be properly installed, maintained and operated under normal conditions.
- Kuryakyn makes no warranty, expressed or implied, with respect to any gold plated products.
- Kuryakyn shall not be liable for any consequential and incidental damages, including labor and paint, resulting from failure of a Kuryakyn product, failure to deliver, delay in delivery, delivery in nonconforming condition, or for any breach of contract or duty between Kuryakyn and a customer.
- Kuryakyn products are often intended for use in specific applications. Kuryakyn makes no warranty if a Kuryakyn product is used in applications other than intended.
- Kuryakyn electrical products are warranted for one (1) year from the date of purchase by the consumer. L.E.D.'S contained in components of Kuryakyn products will be warranted for defects in materials and workmanship for 3 years from the date of purchase where as all other components shall be warranted for one(1) year. This includes, but is not limited to; control modules, wiring, chrome & other components.

- Kuryakyn makes no warranty of any kind in regard to other manufacturer's products distributed by Kuryakyn. Kuryakyn will pass on all warranties made by the manufacturer and where possible, will expedite the claim on behalf of the customer, but ultimately, responsibility for disposition of the warranty claim lies with the manufacturer.

### ABOUT OUR CATALOG

For purchasing Kuryakyn® products, you can receive a complete catalog free of charge. Send the Proof-of-Purchase below with your address to: Kuryakyn, P.O. Box 339, Somerset, WI 54025. Please indicate either Accessories Catalog for Harley-Davidson® or GL & Metric Cruisers.

Be sure to ask your local dealer about other Kuryakyn® products, the motorcycle parts and accessories designed for riders by riders.

©2005 Kuryakyn USA® All Rights reserved.

kuryakyn.com



**STEP 3** Determine the left and right (sitting on the bike) side Relocation Brackets. PIC 1

**STEP 4** After determining the right and left Relocation Brackets, determine the front and rear. The fronts have a narrower tab and the rears have a wider tab. PIC 1

**STEP 5** Insert the #10-32 set screws in to each Relocation Bracket. PIC 2

**STEP 6** Using the hardware removed in Step 2, attach the right side Relocation Brackets to the right side stock board mounts. PIC 3

**STEP 7** Install the floorboards on the new Relocation Brackets using the new hardware included in the kit. Spare washers are included if necessary. PIC 4

**NOTE:** The mounting tabs on the floorboards may have bent if the stock hardware was over tightened. Make sure that the floorboard will fit over the new Relocation Brackets.

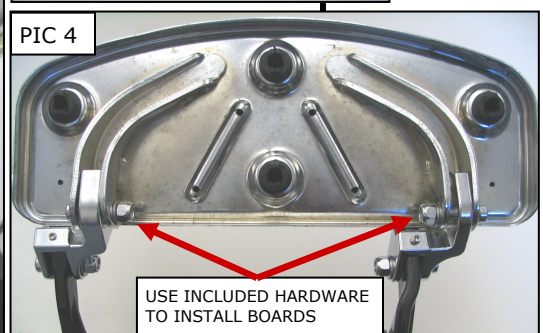
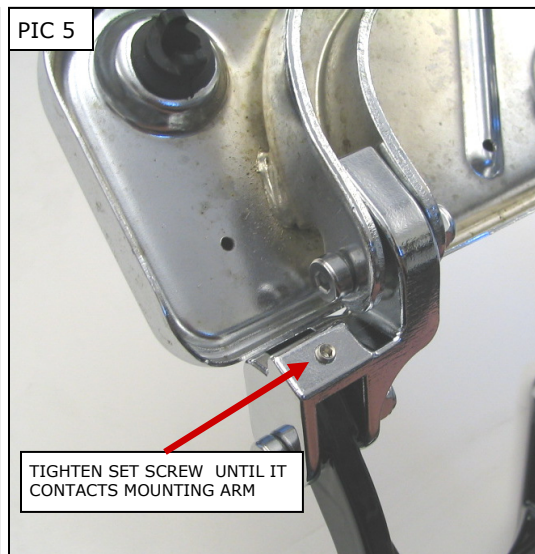
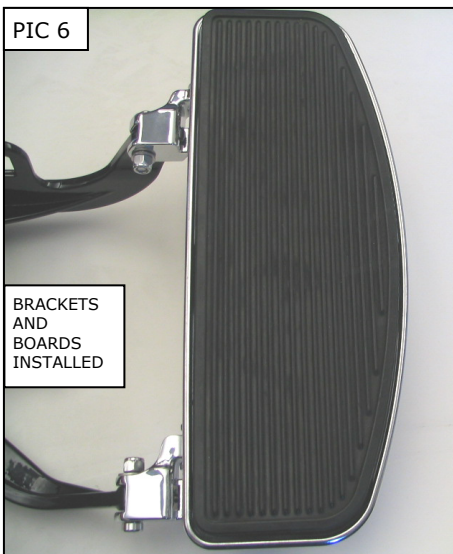
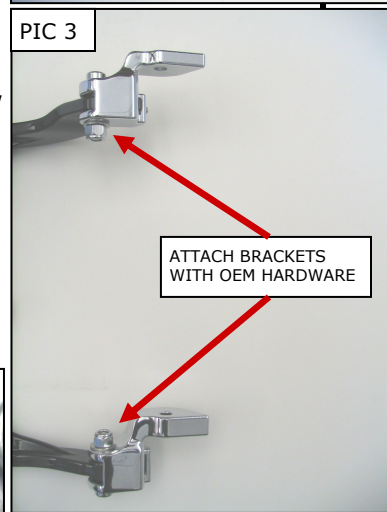
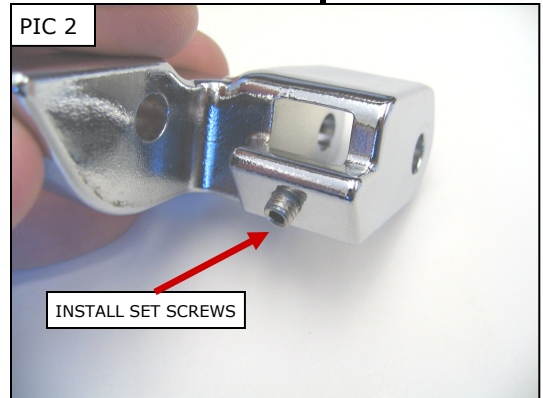
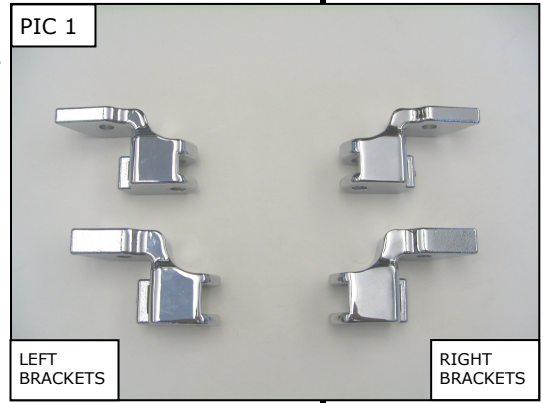
**STEP 8** Tighten the set screws in each Relocation Bracket until the screws come in contact with the stock board mounts. This will keep the Relocation Brackets from moving. PIC 5

**STEP 9** Repeat Step 2 through Step 8 for the left side.

**WARNING** CHECK TO MAKE SURE THAT THERE IS PROPER CLEARANCE WHEN CORNERING. LOSS OF CONTROL OF THE MOTORCYCLE AND SERIOUS INJURY MAY OCCUR WITHOUT PROPER CORNERING CLEARANCE.

**NOTICE** Check clearance for proper operation of controls. The Relocator Brackets provide more room to place your feet/new riding positions. Confirm clearance and relation of the position of your feet to the shifter and the brake pedals.

**NOTICE** It is the installer's responsibility to ensure that all of the fasteners (including pre-assembled) are tightened before operation of the motorcycle. Küryakyn will not provide warranty coverage on products or components lost due to improper installation or lack of maintenance. Periodic inspection and maintenance are required on all fasteners.



*Ride On!*