



# INSTALLATION

## SWINGWING PEGS

## 4466

### PARTS INCLUDED

- 1 Right Swingwing Peg Assembly
- 1 Left Swingwing Peg Assembly
- 1 Installation Instructions

Please read and understand entire instructions before starting installation.

### THANK YOU FOR CHOOSING KÜRYAKYN!

**IN ORDER TO PROTECT YOU AND OTHERS FROM POSSIBLE INJURY AND/OR PROPERTY DAMAGE OR LOSS, PLEASE PAY CLOSE ATTENTION TO ALL INSTRUCTIONS, WARNINGS, CAUTIONS AND NOTICES REGARDING THE USE AND CARE OF THIS PRODUCT.**

#### WARNING

**THIS INDICATION ALERTS YOU TO THE FACT THAT IGNORING THE CONTENTS DESCRIBED HEREIN CAN RESULT IN POTENTIAL DEATH OR SERIOUS INJURY.**

#### NOTICE

**This indication alerts you to the fact that ignoring the contents described herein may negatively affect product performance and functionality.**

#### NOTICE

**IF INSTALLING THIS PRODUCT FOR ANOTHER PARTY, PLEASE MAKE SURE THEY RECEIVE THIS COPY OF THE INSTALLATION INSTRUCTIONS SO THEY ARE AWARE OF THE IMPORTANT INFORMATION CONTAINED IN THEM.**

### TOOLS SUGGESTED

Set of Combination Wrenches, Set of Hex Wrenches

**STRICTLY OBSERVE THE FOLLOWING GUIDELINES IN ORDER TO USE THE PRODUCT PROPERLY AND AVOID POTENTIALLY DANGEROUS ACCIDENTS.**

### STEP 1

Read and understand all steps in the instructions before starting the installation. Park the motorcycle on a hard, level surface and turn off the ignition. Let cool.

#### WARNING

**YOU WILL BE WORKING AROUND THE ENGINE AND EXHAUST SYSTEM DURING INSTALLATION. ENSURE THAT THE ENGINE AND EXHAUST SYSTEM HAVE FULLY COOLED TO PREVENT INJURY.**

#### WARNING

**A FACTORY SERVICE MANUAL WILL BE HELPFUL IN PERFORMING THIS INSTALLATION. DO NOT ATTEMPT TO PERFORM THIS INSTALLATION IF YOU ARE NOT CONFIDENT IN YOUR ABILITY TO COMPLETE ALL OF THE STEPS IN THE PROCEDURE; CONSULT A TRAINED TECHNICIAN. IMPROPER INSTALLATION COULD RESULT IN SERIOUS INJURY OR DEATH.**

### STEP 2

Determine the left from the right (sitting on the bike) Swingwing Peg. PIC 1

### CUSTOMER SERVICE

877.370.3604 (toll free)

### INSTALLATION QUESTIONS

techsupport@kuryakyn.com  
or call 715.247.2983

### LIMITED WARRANTY

Kuryakyn warrants that any Kuryakyn products sold hereunder, shall be free of defects in materials and workmanship for a period of one (1) year from the date of purchase by the consumer excepting the following provisions:

- Kuryakyn shall have no obligation in the event the customer is unable to provide a receipt showing the date the customer purchased the product(s).
  - The product must be properly installed, maintained and operated under normal conditions.
- Kuryakyn makes no warranty, expressed or implied, with respect to any gold plated products.
  - Kuryakyn shall not be liable for any consequential and incidental damages, including labor and paint, resulting from failure of a Kuryakyn product, failure to deliver, delay in delivery, delivery in nonconforming condition, or for any breach of contract or duty between Kuryakyn and a customer.
- Kuryakyn products are often intended for use in specific applications. Kuryakyn makes no warranty if a Kuryakyn product is used in applications other than intended.
- Kuryakyn electrical products are warranted for one (1) year from the date of purchase by the consumer. L.E.D.'S contained in components of Kuryakyn products will be warranted for defects in materials and workmanship for 3 years from the date of purchase where as all other components shall be warranted for one(1) year. This includes, but is not limited to; control modules, wiring, chrome & other components.
  - Kuryakyn makes no warranty of any kind in regard to other manufacturer's products distributed by Kuryakyn. Kuryakyn will pass on all warranties made by the manufacturer and where possible, will expedite the claim on behalf of the customer, but ultimately, responsibility for disposition of the warranty claim lies with the manufacturer.

### ABOUT OUR CATALOG

For purchasing Kuryakyn® products, you can receive a complete catalog free of charge. Send the Proof-of-Purchase below with your address to: Kuryakyn, P.O. Box 339, Somerset, WI 54025. Please indicate either Accessories Catalog for Harley-Davidson® or GL & Metric Cruisers.

Be sure to ask your local dealer about other Kuryakyn® products, the motorcycle parts and accessories designed for riders by riders.

©2005 Kuryakyn USA® All Rights reserved.



kuryakyn.com

**STEP 3** Starting on the left side, remove the stock peg from the clevis. Pay attention to any spacers or washers installed between the male mount and the clevis, it may be helpful later. Set this hardware aside, it will be reused.

**NOTE:** Ensure that all of the fasteners are tight before operating the motorcycle. **PIC 2, PIC 3**

**STEP 4** Install the new peg using any spacers or washers removed in Step 3. Line up the new peg mount hole with the hole in the clevis.

**STEP 5** Secure the peg in the clevis using the OEM hardware removed in Step 3. Check that the peg is installed correctly and is able to fold upward.

**WARNING** FOOTPEGS MUST BE INSTALLED SO THEY WILL FOLD UPWARD AND REARWARD IF HIT BY ANY OBJECT. FAILURE TO ADJUST THE FOOTPEGS TO OPERATE IN THIS MANNER COULD RESULT IN SERIOUS INJURY OR DEATH.

**STEP 6** Unlock the Swingwing arm by pulling back (PIC 4) on the top and bottom finger pads. While holding the finger pads back, rotate the arm forward. Once the arm is moving release the finger pads and keep rotating the arm until it locks in the forward position.

**STEP 7** Position the peg as desired making sure the splines on the male mount are engaged in the splines on the peg body. Using a hex wrench, tighten the 5/16"-18 socket head cap screw located inside the large hole on the end of the peg. **PIC 5**

**WARNING** CHECK TO MAKE SURE THAT THERE IS PROPER GROUND CLEARANCE WITH AND WITHOUT THE FOLDING ARM EXTENDED WHEN CORNERING. LOSS OF CONTROL OF THE MOTORCYCLE AND SERIOUS INJURY MAY OCCUR IF THE SWINGWING PEG IS NOT POSITIONED PROPERLY. REPOSITION THE SWINGWING PEG IF NECESSARY SO THAT THERE IS ADEQUATE CORNERING CLEARANCE.

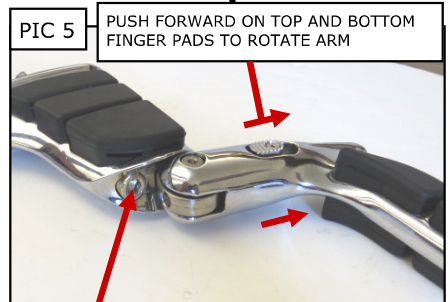
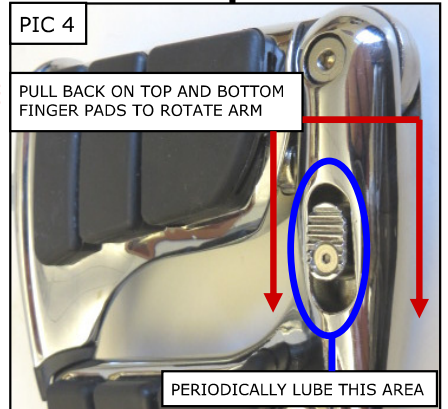
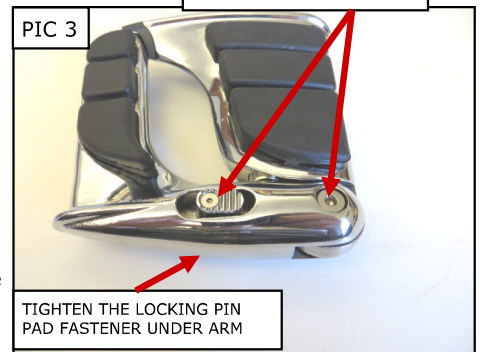
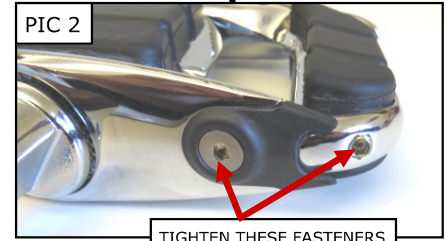
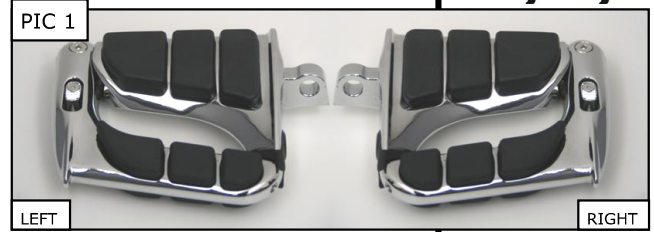
**STEP 8** To fold the arm down, unlock the Swingwing arm by pushing forward (PIC 5) on the top and bottom finger pads. While holding the finger pads forward, rotate the arm back. Once the arm is moving release the finger pads and keep rotating the arm until it locks in the rearward position.

**NOTE:** Periodically lubricate the finger pad/locking pin with a good quality spray lube. **PIC 4**

**STEP 9** Repeat Steps 3 through 7 for the right side peg.

**WARNING** THE FOLDING ARM IS INTENDED AS A FOOTREST AND IS NOT INTENDED TO BE USED FOR MOUNTING OR DISMOUNTING THE MOTORCYCLE OR TO SUPPORT THE FULL WEIGHT OF THE DRIVER OR PASSENGER.

**NOTICE** It is the installer's responsibility to ensure that all of the fasteners (including pre-assembled) are tightened before operation of the motorcycle. Küryakyn will not provide warranty coverage on products or components lost due to improper installation or lack of maintenance. Periodic inspection and maintenance are required on all fasteners.



5/16"-18 SOCKET HEAD CAP SCREW